



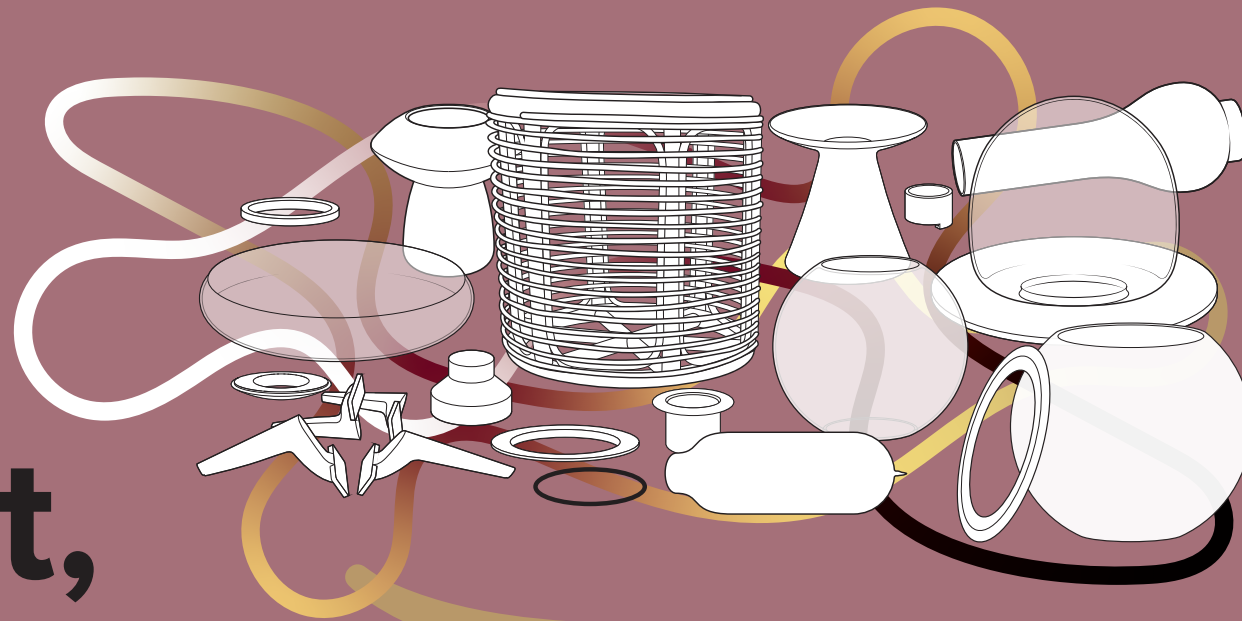
CHRISTIE
FISHER BARRY



PRE-LOVED ASSEMBLY



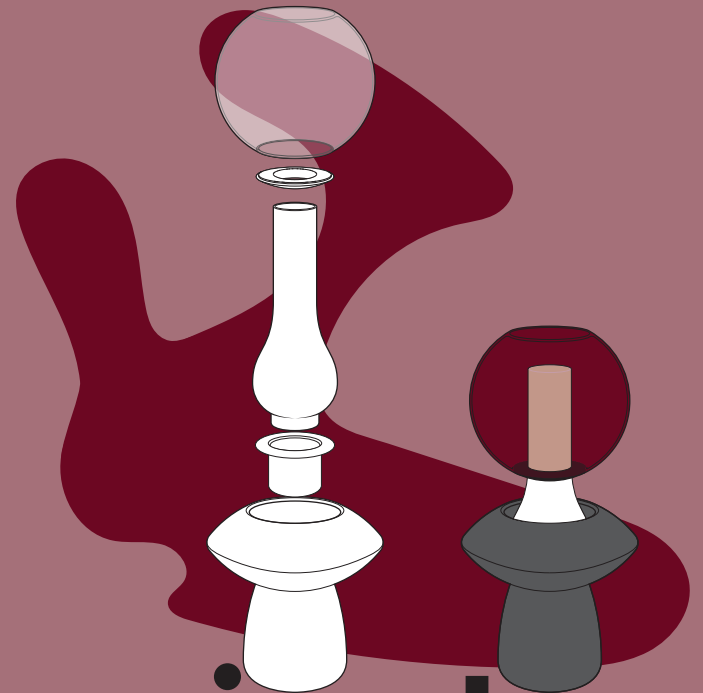
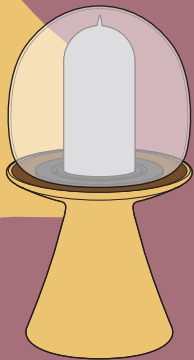
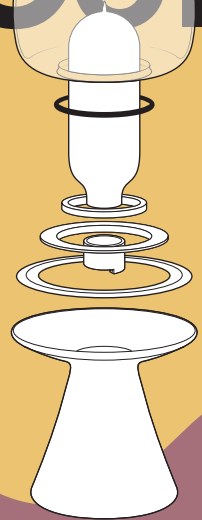
Collect,



combine,



illuminate.





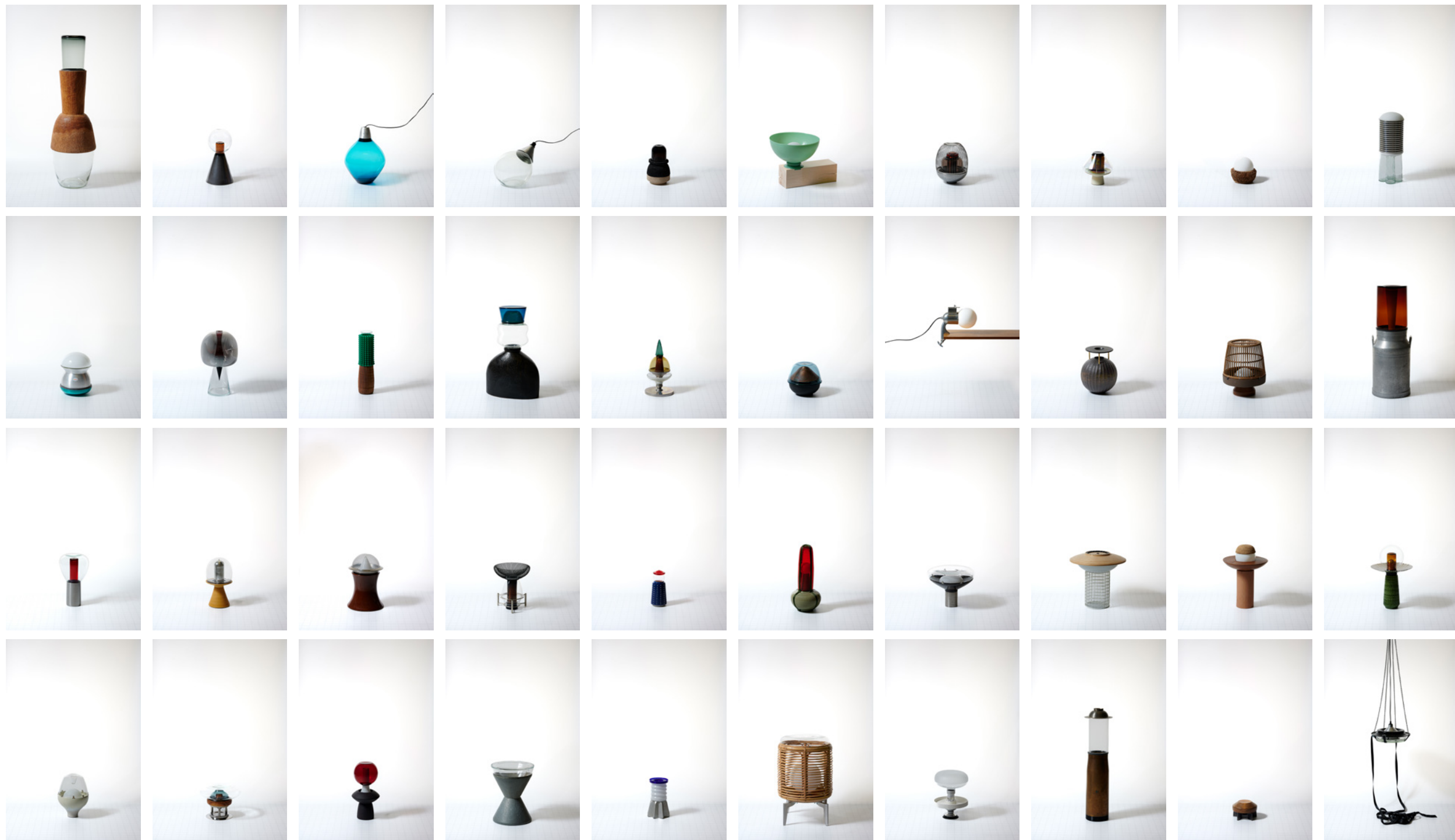
Brockable.

Find. Trade. Build.

Join the movement.

These lamps are the result of chance encounters with objects, merging serendipity and design intent, breathing new life into neglected items and celebrating the repurposing of ready-made objects discovered through local brockis (secondhand shops) in Bern.

Emitting a warm, archetypal glow that fosters a sense of connection and mindful curation of environments rooted in locality and ritual.



Photos: Claudio Zingranello



Janus - 2025
95 x 65 x 21 cm

Two hand-blown vessels are threaded into a single arc of industrial ducting, swollen at the base.

Each holding a suspended form like lungs drawing light, held by pressure and gravity, not glue.

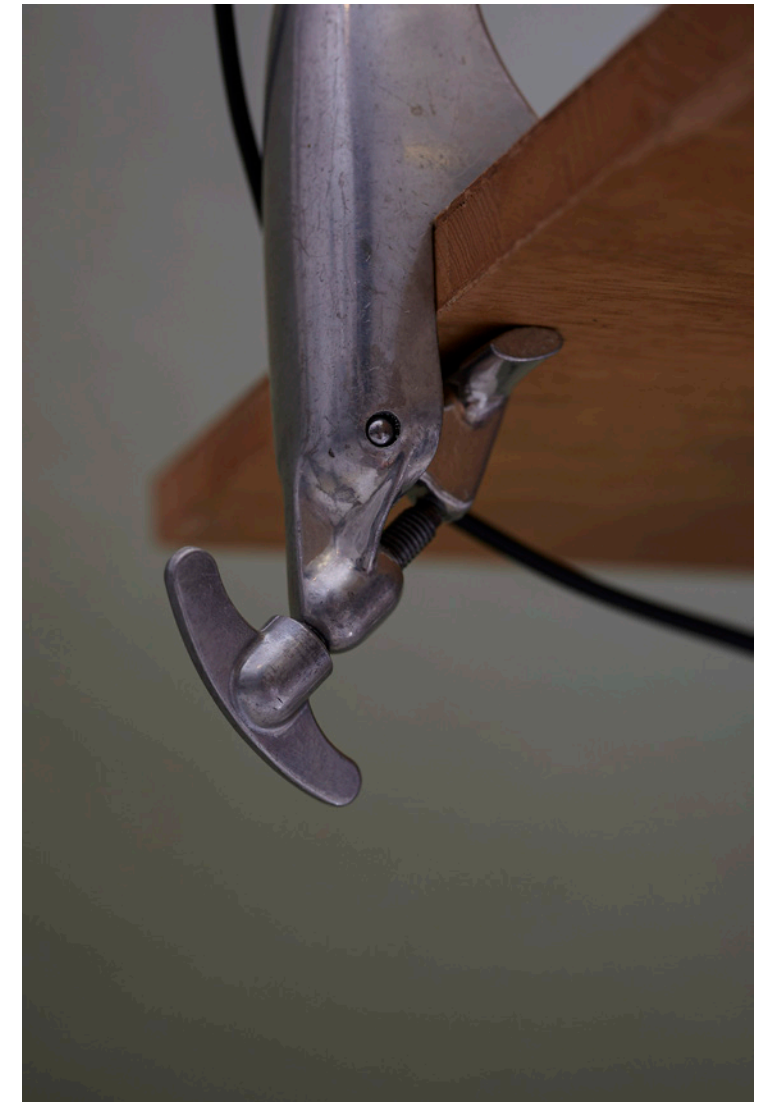




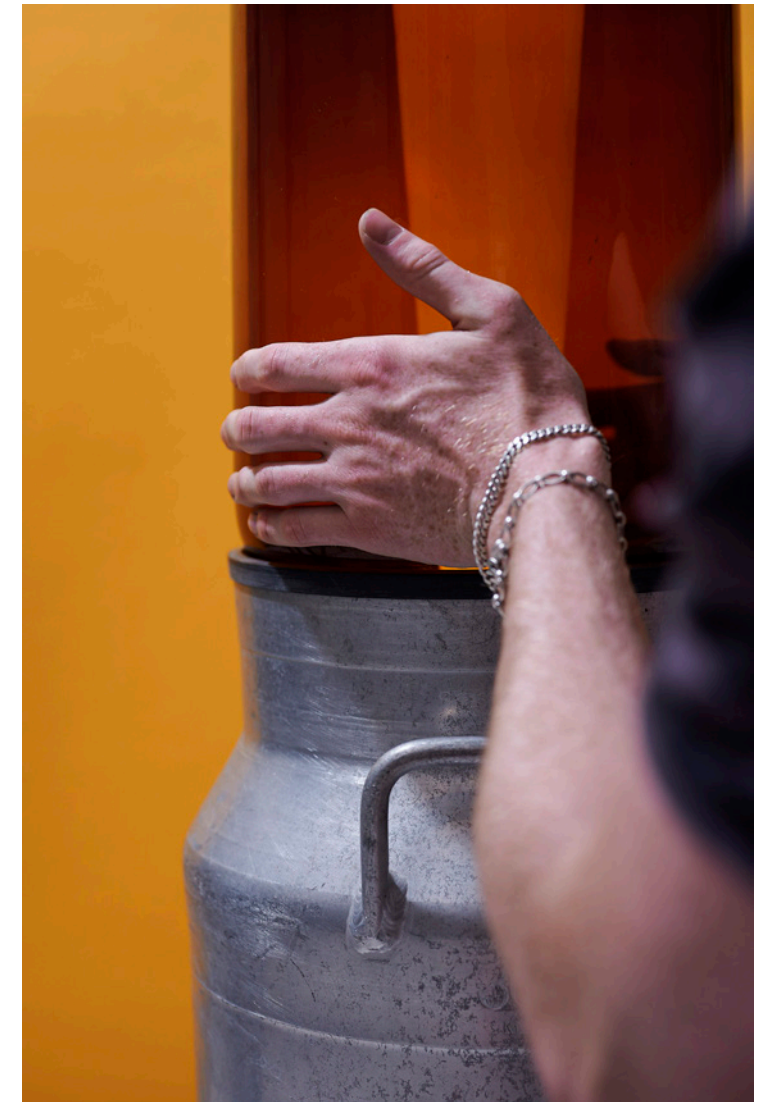
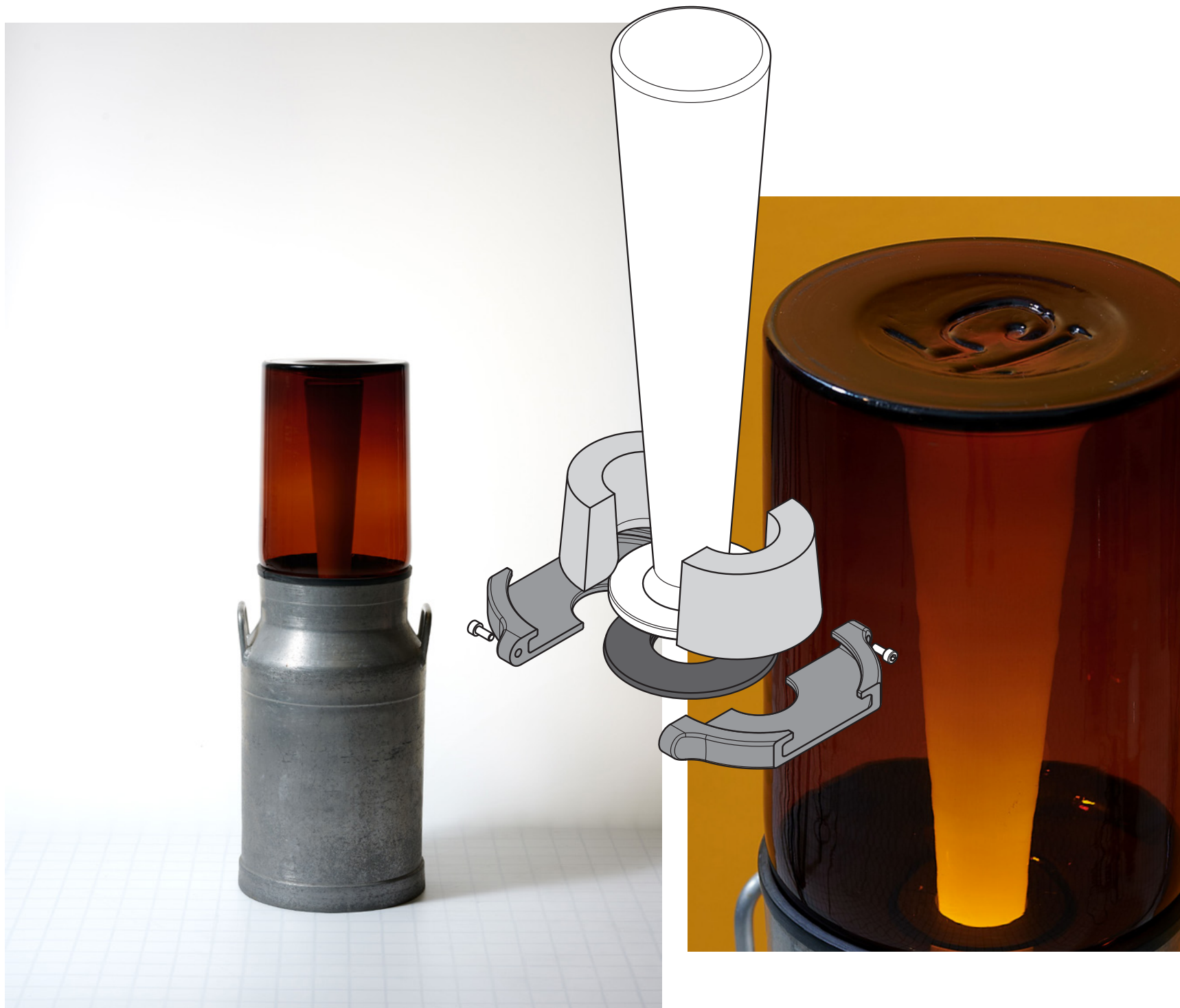
Voyager - 2025
142 x 44 cm

A hand-carved Ivorian conga drum shell, in dialogue with repurposed glass artefacts. Landed from another realm.

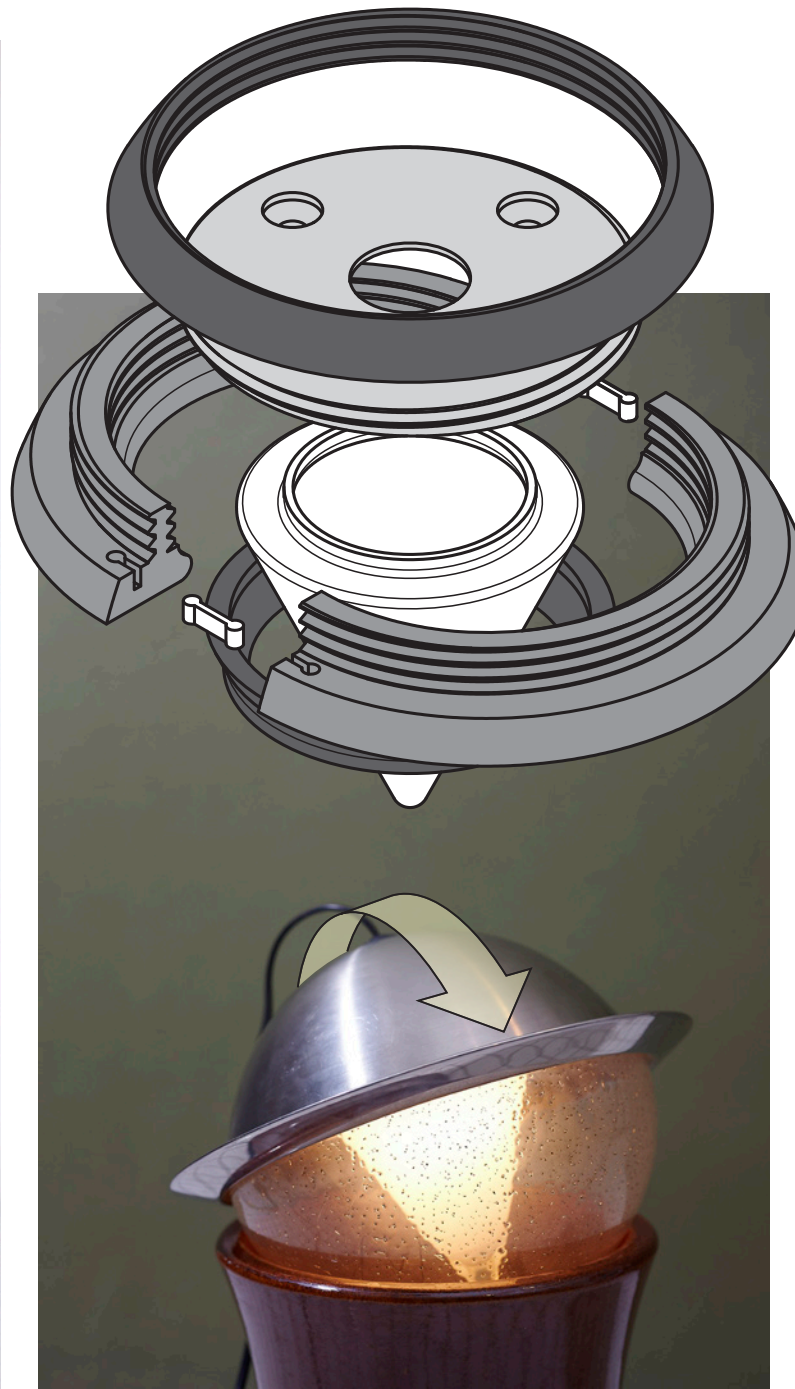




A drum cheese grater epitomises the Swiss brocki hunt. Simple, accessible design, engineered with the appropriate material, all topped with a twist of dairy.



Milk churn with 15 litre apothecary bottle. The white glass diffuser is held in place using the conical shape of the neck in combination with a five part 3D print, with embedded magnets and threaded inserts for a fully mechanical fastening.



The free-standing ceramic chimney allows the spherical lamp to be rotated and flipped for different environments. The components are held together with threaded 3D prints.



Turned bowl from burled wood, routed and paired with a double ended 3D print.

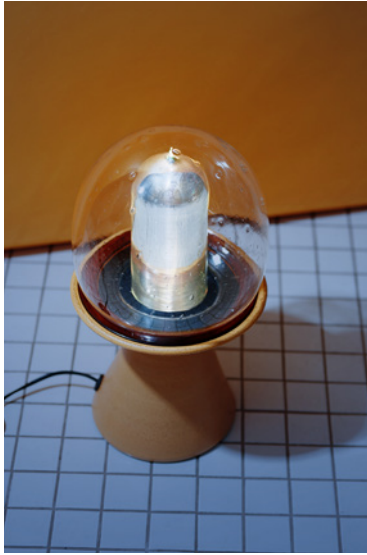
Plugging the cylindrical ceramic wine storage and connecting it to the routed wood, the print then engages with the thread of the opal glass globe.



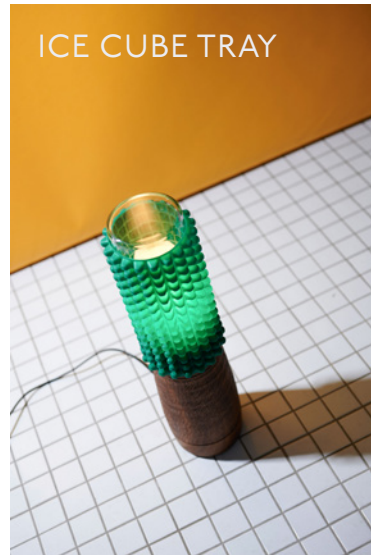
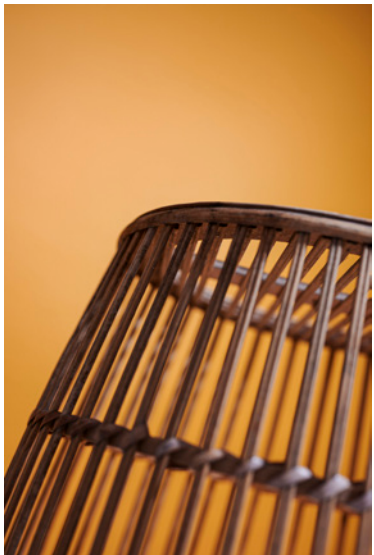
Carved by hand, the African djembe's distinctive grain is revealed; this deep texture is contrasted by the lustre of the two glass artefacts. 3D prints utilize the conical shape of the djembe to lock the components together.



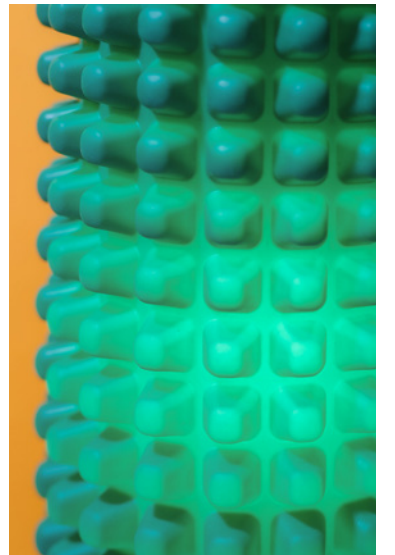
Crowned with a flash of blue, humble mixing bowls are stacked onto an organic vase. The monolithic ceramic torso grounds the composition, held firmly in place by gravity.

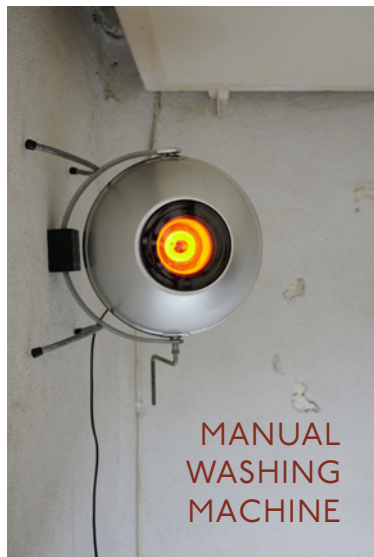
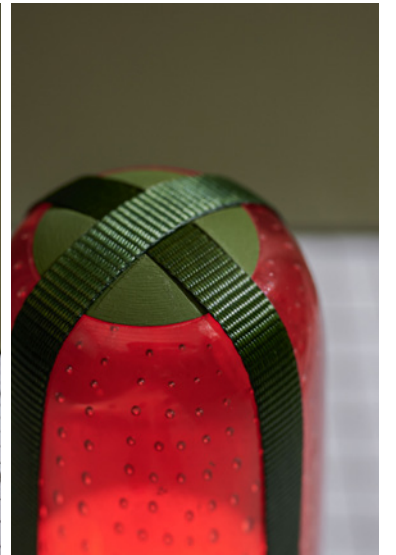
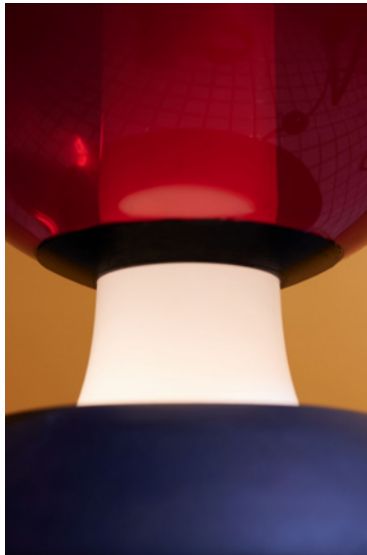


DUCTING SUPPORT

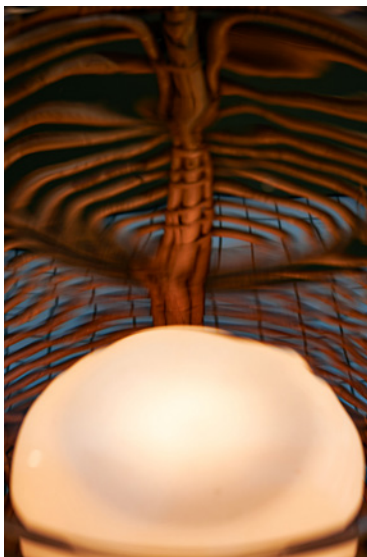


ICE CUBE TRAY

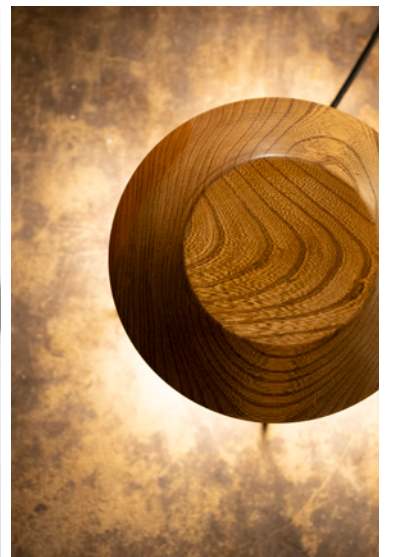


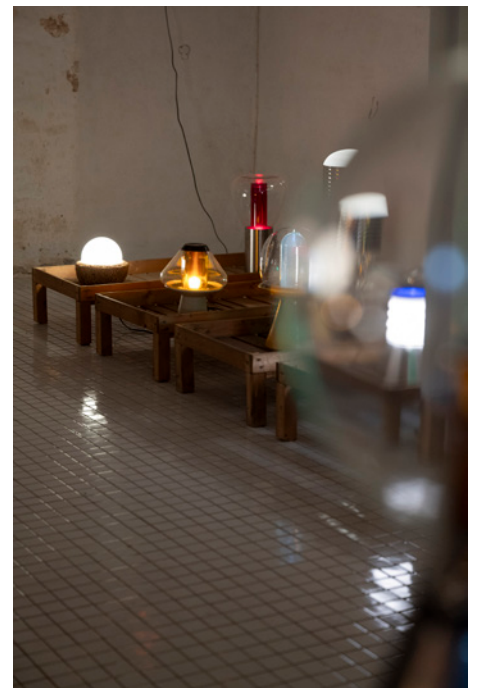


MANUAL
WASHING
MACHINE



FONDUE
STAND







Hello...

Christie Fisher Barry is a British designer and artist based in Bern, Switzerland (b. 1995, Stockport, UK). Currently developing his own creative practice, with a focus on found objects and locality, whilst also holding a Senior Design position in the Connected Home industry.

Combining a forward-looking mindset with a deep respect for finite resources. Valuing the fusion of technology and tradition to bridge online and offline worlds.

Christie Fisher Barry (Ausweis C)
06.03.1995
+41 79 958 3450
christiejfb@hotmail.com
<https://www.linkedin.com/in/christiejfb/>

Cheers,

for more information, get in touch.

christiejfb@hotmail.com

+41 79 958 3450